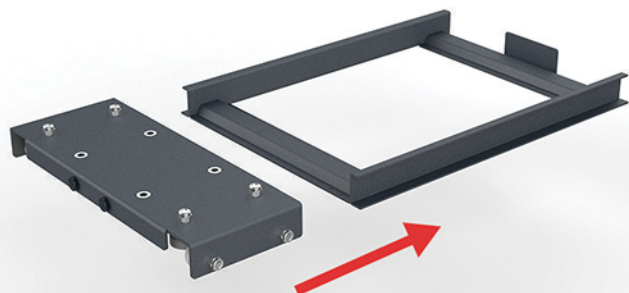


# Blind Corner Pull Out

Left Opening Installation  
EBCPOSB700 | EBCPOWB700

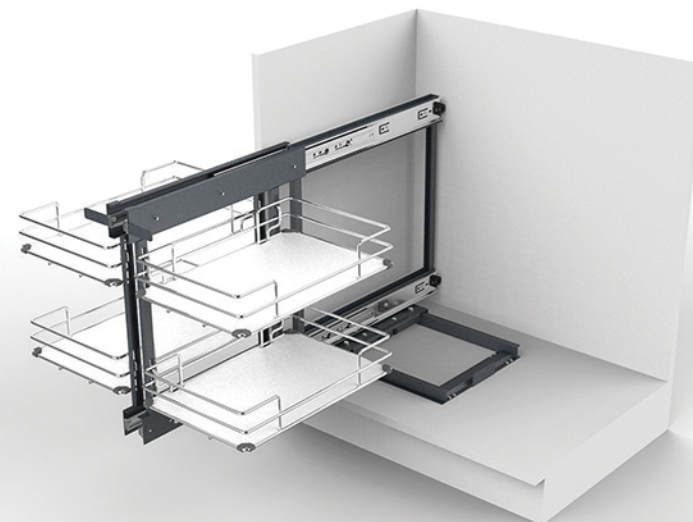
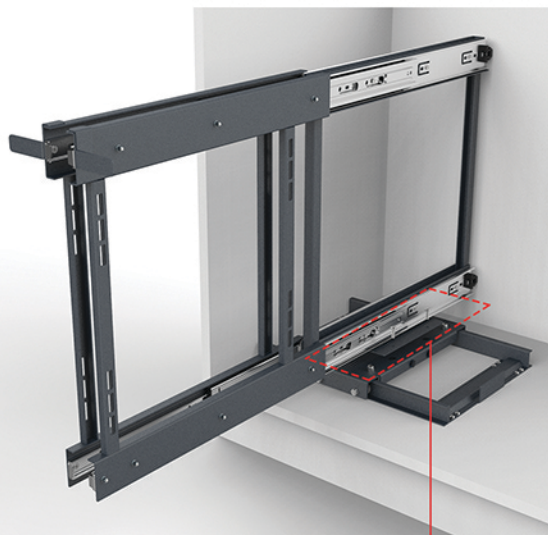
STEP - 1



Slide the Roller into Base as shown in the picture.

STEP - 3

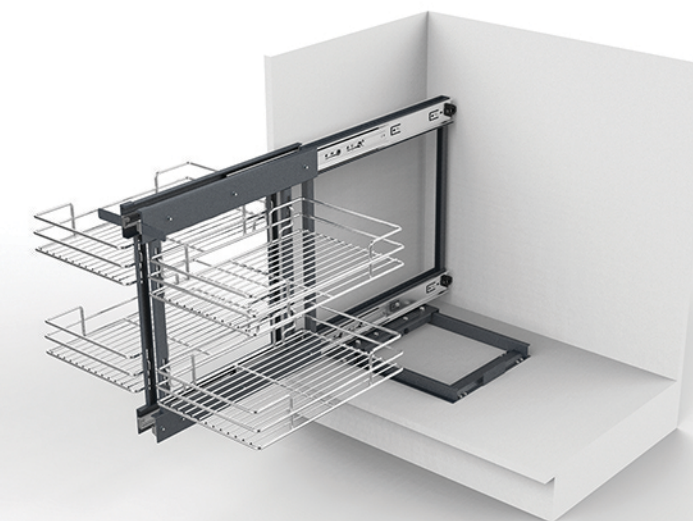
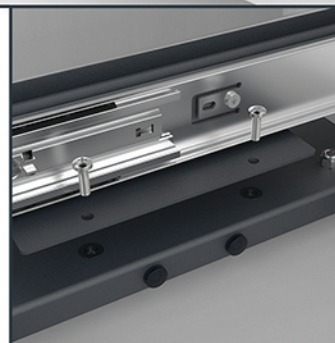
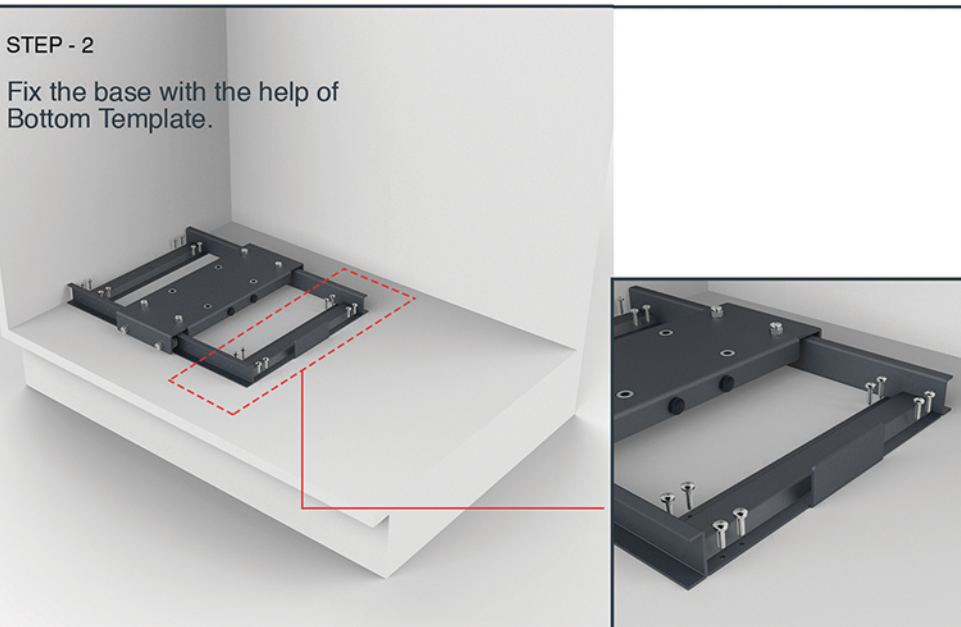
Fix the sliding frame as shown in the picture.



Installation Complete: EBCPOSB700

STEP - 2

Fix the base with the help of Bottom Template.



Installation Complete: EBCPOWB700